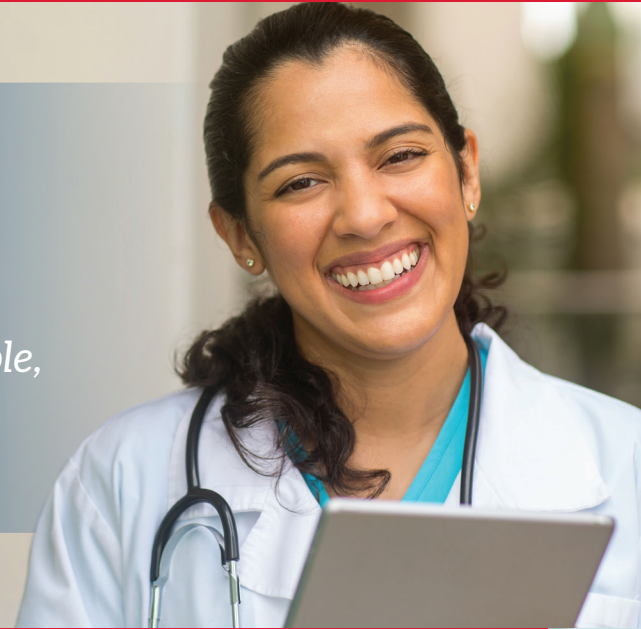


MASTER of SCIENCE in NURSING FAMILY NURSE PRACTITIONER

HyFlex Format

*Allows nurses to achieve their dreams with flexible,
yet individualized learning methods*



OVERVIEW

Balancing work, school, and family can be a challenge. We understand, and that is why we are offering you a chance to attend class on your schedule. Whether you prefer face-to-face teaching in the classroom, online synchronous instruction, studying on your own time, or even a mixture of all three we have you covered.

- Instructor guided learning
- Interactive course work with peers
- Flexibility to choose how you attend class

*Are you ready
to become a FNP,
but don't think you
have time for class?*

**Check out our
HyFlex option**



Phone:
800.362.0014

Email:
admissions@king.edu

King University is certified by SCHEV to operate in Virginia. King's primary location in Virginia is Southwest Virginia Higher Education Center, 1 Partnership Circle, Abingdon, VA 24210.

King University nursing programs are fully approved by the Tennessee Board of Nursing. The baccalaureate degree program in nursing, master's degree program in nursing, and Doctor of Nursing Practice program at King University are accredited by the Commission on Collegiate Nursing Education (<http://www.ccnaccreditation.org>).

WHAT is HyFlex Learning?

Students will be allowed to choose their preferred modality for instruction each week while receiving the same quality educational experience regardless of learning platform.

**DON'T DELAY,
APPLY TODAY!**



HyFlex 1:

Attend class in person with an instructor at the Abingdon campus each Tuesday.

Enjoy face-to-face instruction.

HyFlex 2:

Attend a live class virtually in real-time with the instructor teaching, but you are attending class in the comfort of your home (Synchronous).

Convenient when you do not have time to drive to class and go to work.



HyFlex 3:

Attend a recorded live lecture and participate each week at home at your convenience and on your own schedule (Asynchronous).

When work and/or life is so busy you are unable to attend the live lectures.

**Students must choose HyFlex 1 or HyFlex 2 for Weeks 1 and 14
(dates to be published in advance).**



KING
UNIVERSITY

1867

School of Nursing

Phone:
800.362.0014

Email:
admissions@king.edu

King University is certified by SCHEV to operate in Virginia. King's primary location in Virginia is Southwest Virginia Higher Education Center, 1 Partnership Circle, Abingdon, VA 24210.

King University nursing programs are fully approved by the Tennessee Board of Nursing. The baccalaureate degree program in nursing, master's degree program in nursing, and Doctor of Nursing Practice program at King University are accredited by the Commission on Collegiate Nursing Education (<http://www.ccnaccreditation.org>).